

BISON MACHINERY

TAIZHOU BISON MACHINERY CO.,LTD.

No.1988 Haichang Road,Jiaojiang,
Taizhou City,Zhejiang Province,China
Tel:0086-576-88205202

[Http://www.bisonpower.net](http://www.bisonpower.net)



BISON MACHINERY

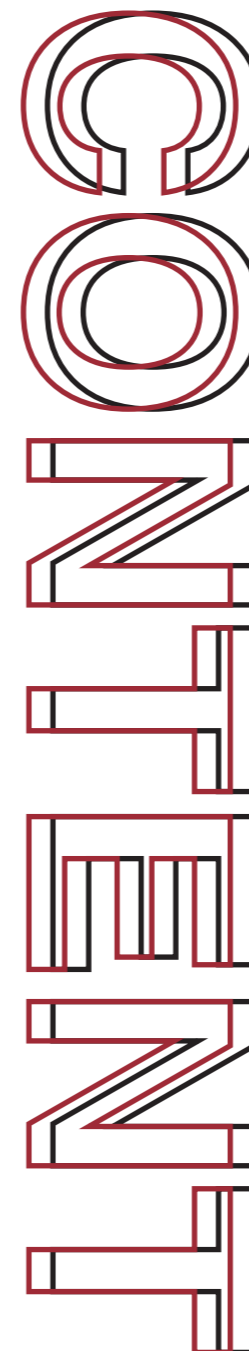
GASOLINE GENERATOR
DIESEL GENERATOR
INVERTER GENERATOR
HIGH PRESSURE WASHER
ENGINE
WATER PUMP
LITHIUM ELECTRIC TOOLS
HAND TOOLS
GARDEN TOOLS
CONSTRUCTION MACHINERY
AIR COMPRESSOR
SPARE PARTS

2015-2023



BISON

MACHINERY



| | |
|------------------------|----|
| GASOLINE GENERATOR | 01 |
| DIESEL GENERATOR | 05 |
| INVERTER GENERATOR | 09 |
| HIGH PRESSURE WASHER | 13 |
| ENGINE | 17 |
| WATER PUMP | 19 |
| LITHIUM ELECTRIC TOOLS | 21 |
| HAND TOOLS | 25 |
| GARDEN TOOLS | 29 |
| CONSTRUCTION MACHINERY | 33 |
| AIR COMPRESSOR | 35 |
| SPARE PARTS | 39 |

WHO IS BISON

The Fastest Growing Generator Supplier

Founded in 2015, Bison's product line has expanded to **portable generators, inverter generators, pressure washer.** Now is the fastest growing generator supplier in China.



30,000+m²

Factory

310+

Staffs

6+

Production Line

WHAT BISON COULD OFFER

- 12 Month Warranty
- 30 Days Delivery Time
- Product with CE, Rosh, PaHS, Noise and EURO V certified
- Spare Part & Engineering Technical Support



GASOLINE GENERATOR

01

GASOLINE GENERATOR



EASY TO START, COMPACT, FUEL EFFICIENT, PROVIDES SMOOTH, CLEAN POWER; AC/DC OUTPUT AND CABLE FOR 12V BATTERY CHARGING,

| SPECIFICATIONS | BS9500 | BS10500 |
|------------------------------------|--------------------------|-------------|
| ENGINE MODEL | BS192F | BS194F |
| ENGINE TYPE | SINGLE CYLINDER,4-STROKE | |
| STARTING SYSTEM | RECOIL/ELECTRIC | |
| BORE*STROKE(MM) | 92*69 | 94*72 |
| DISPLACEMENT(ML) | 459 | 499 |
| RATED POWER(KW) | 7.5 | 8.0/9.0 |
| MAX.POWER(KW) | 8 | 8.5/9.5 |
| RATED VOLTAGE | 220V | 220V/380V |
| RATED FREQUENCY | 50HZ | |
| DC OUTPUT | 12V/8.3A | |
| FUEL CONSUMPTION(G/KW.H) | ≤370 | ≤395 |
| 1/2 LOAD CONTINOUS RUNNING TIME(H) | 11 | 15 |
| FUEL TANK CAPACITY(L) | 25 | 40 |
| NET WEIGHT(KG) | 92 | 97 |
| CARTON DIMENSIONS(L*W*H)MM | 690*530*555 | 730*560*610 |
| QTY(20GP/40GP/40HQ) | 140/275/275 | 84/192/265 |





| SPECIFICATIONS | BS950 | BS2500 | BS3000 |
|------------------------------------|--------------------------|--------------------------|--------|
| ENGINE MODEL | 1E45F | BS168F-1 | BS170F |
| ENGINE TYPE | SINGLE CYLINDER,2-STROKE | SINGLE CYLINDER,4-STROKE | |
| STARTING SYSTEM | RECOIL | RECOIL/ELECTRIC | |
| BORE*STROKE(MM) | 45*38 | 68*54 | 70*56 |
| DISPLACEMENT(ML) | 63 | 196 | 210 |
| RATED POWER(KW) | 0.65 | 2 | 2.5 |
| MAX.POWER(KW) | 0.75 | 2.2 | 2.8 |
| RATED VOLTAGE | 220V | 220V | 220V |
| RATED FREQUENCY | 50HZ | | |
| DC OUTPUT | 12V/8.3A | | |
| FUEL CONSUMPTION(G/KW.H) | ≤950 | ≤405 | |
| 1/2 LOAD CONTINOUS RUNNING TIME(H) | 10 | 24 | 19 |
| FUEL TANK CAPACITY(L) | 4 | 15 | 15 |
| NET WEIGHT(KG) | 19 | 36 | 40 |
| CARTON DIMENSIONS(L*W*H)MM | 420*340*325 | 605*440*440 | |
| QTY(20GP/40GP/40HQ) | 735/1470/1720 | 240/480/580 | |



| SPECIFICATIONS | BS3500 | BS6500 | BS7500 | BS8500 |
|------------------------------------|--------------------------|-------------|--------|--------|
| ENGINE MODEL | BS170F | BS190F | BS190F | BS192F |
| ENGINE TYPE | SINGLE CYLINDER,4-STROKE | | | |
| STARTING SYSTEM | RECOIL/ELECTRIC | | | |
| BORE*STROKE(MM) | 70*56 | 90*66 | 90*66 | 92*69 |
| DISPLACEMENT(ML) | 210 | 420 | 420 | 459 |
| RATED POWER(KW) | 2.8 | 5 | 6 | 7 |
| MAX.POWER(KW) | 3 | 5.5 | 6.5 | 7.5 |
| RATED VOLTAGE | 220V | | | |
| RATED FREQUENCY | 50HZ | | | |
| DC OUTPUT | 12V/8.3A | | | |
| FUEL CONSUMPTION(G/KW.H) | ≤405 | ≤370 | | |
| 1/2 LOAD CONTINOUS RUNNING TIME(H) | 17 | 16 | 13 | 12 |
| FUEL TANK CAPACITY(L) | 15 | 25 | 25 | 25 |
| NET WEIGHT(KG) | 42 | 82 | 84 | 89 |
| CARTON DIMENSIONS(L*W*H)MM | 605*440*440 | 690*530*555 | | |
| QTY(20GP/40GP/40HQ) | 240/480/580 | 140/275/275 | | |



05

DIESEL GENERATOR



EASY TO START, COMPACT,
FUEL EFFICIENT,
PROVIDES SMOOTH,
CLEAN POWER;
AC/DC OUTPUT AND CABLE FOR
12V BATTERY CHARGING,



| | | | |
|-------------------|--|-------------|------------|
| MODEL NAME | BS3500DE/S | BS6500DE/S | BS7000DE/S |
| POWER RANGE | 2.8-3.0KW | 4.5-5.0KW | 5.0-5.5KW |
| VOLTAGE/FREQUENCY | 110/120/220/230/240/380/400V 50/60HZ | | |
| ENGINE MODEL | 178FA(6HP) | 186FA(10HP) | 188F(11HP) |
| START METHOD | ELECTRIC START | | |
| MOTOR TYPE | BRUSH SELF EXCITED | | |
| STANDARD FEATURES | VOLTMETER, AC OUTPUT SOCKET, AC CIRCUIT BREAKER, OIL ALERT | | |
| OPTIONAL FEATURES | FOUR SIDES WHEELS, DIGITAL METER, ATS, REMOTE CONTROL, EMERGENCY STOP, HEATER, DUAL VOLTAGE, EQUIPOWER 3 PHASE | | |





| | | | | |
|-------------------|--|------------|------------|-------------|
| MODEL NAME | BS7500DE/S | BS8000DE/S | BS8500DE/S | BS9000DE/S |
| POWER RANGE | 5.5-6.0KW | 6.0-6.5KW | 7.0-7.5KW | 7.5-8.0KW |
| VOLTAGE/FREQUENCY | 110/120/220/230/240/380/400V 50/60HZ | | | |
| ENGINE MODEL | 188F(11HP) | 192F(12HP) | 195F(13HP) | 1100F(14HP) |
| START METHOD | ELECTRIC START | | | |
| MOTOR TYPE | BRUSH SELF EXCITED | | | |
| STANDARD FEATURES | VOLTMETER, AC OUTPUT SOCKET, AC CIRCUIT BREAKER, OIL ALERT | | | |
| OPTIONAL FEATURES | FOUR SIDES WHEELS, DIGITAL METER, ATS, REMOTE CONTROL, EMERGENCY STOP, HEATER, DUAL VOLTAGE, EQUIPOWER 3 PHASE | | | |



| | | | | |
|-------------------|--|-------------|-------------|-------------|
| MODEL NAME | BS11000DE/S | BS12000DE/S | BS15000DSE | BS18000DSE |
| POWER RANGE | 9.5-10.0KW | 10.0-11.0KW | 12.0-13.0KW | 15.0-15.5KW |
| VOLTAGE/FREQUENCY | 110/120/220/230/240/380/400V 50/60HZ | | | |
| ENGINE MODEL | 1103F(15HP) | 2V88(25HP) | 2V92(30HP) | 2V95(33HP) |
| START METHOD | ELECTRIC START | | | |
| MOTOR TYPE | BRUSH SELF EXCITED | | | |
| STANDARD FEATURES | VOLTMETER, AC OUTPUT SOCKET, AC CIRCUIT BREAKER, OIL ALERT | | | |
| OPTIONAL FEATURES | FOUR SIDES WHEELS, DIGITAL METER, ATS, REMOTE CONTROL, EMERGENCY STOP, HEATER, DUAL VOLTAGE, EQUIPOWER 3 PHASE | | | |

09

INVERTER GENERATOR



- Low noise
- Small size
- Low fuel consumption
- Light weight
- Easy to operate



BS2000IS

| | |
|----------------------------------|--------------------------------|
| ENGINE TYPE | SINGLE CYLINDER, 4-STROKE(OHV) |
| BORExSTROKE | 48.6 X 43MM |
| DISPLACEMENT | 79.7ML |
| COMPRESSION RATIO | 8.7:1 |
| RATED FREQUENCY | 50HZ |
| RATED VOLTAGE | 230V |
| RATED POWER | 1.8KW |
| MAX.POWER | 2.0KW |
| DC OUTPUT | 12V/8.3A |
| STARTING SYSTEM | RECOIL |
| FUEL TANK CAPACITY | 4L |
| FULL LOAD CONTINUUM RUNNING TIME | 4H |
| 1/2 LOAD CONTINUUM RUNNING TIME | 6H |
| NOISE(7M) | 67 dB |
| THD(%) | <2 |
| NET WEIGHT | 22KG |
| DIMENSIONS(L X W XH) | 498X290X459MM |



BS2500IS

| | |
|----------------------------------|--------------------------------|
| ENGINE TYPE | SINGLE CYLINDER, 4-STROKE(OHV) |
| BORExSTROKE | 60 X 43MM |
| DISPLACEMENT | 122ML |
| COMPRESSION RATIO | 8.2:1 |
| RATED FREQUENCY | 50HZ |
| RATED VOLTAGE | 230V |
| RATED POWER | 2.3KW |
| MAX.POWER | 2.5KW |
| DC OUTPUT | 12V/8.3A |
| STARTING SYSTEM | RECOIL |
| FUEL TANK CAPACITY | 4.5L |
| FULL LOAD CONTINUUM RUNNING TIME | 3H |
| 1/2 LOAD CONTINUUM RUNNING TIME | 5H |
| NOISE(7M) | 67 dB |
| THD(%) | <2 |
| DIMENSIONS(L X W X H) | 520X320X450MM |
| NET WEIGHT | 25KG |

BS4500ISE/ BS6250ISE

| | | |
|--------------------------|--------------------------------|-------|
| ENGINE TYPE | SINGLE CYLINDER, 4-STROKE(OHV) | |
| DISPLACEMENT | 223CC | |
| START TYPE | MANUAL START/ELECTRIC START | |
| OIL CAPACITY | 0.7 | |
| TANK CAPACITY(L) | 12L | 11L |
| FUL LOAD RUNNING TIME(H) | 8H | 4H |
| FREQUENCY(HZ) | 50/60HZ | |
| VOLTAGE(V) | 120-240V | |
| RATED POWER(KW) | 3.5kw | 5KW |
| MAX POWER (KW) | 4KW | 5.5KW |
| 12V DC OUTPU | 8.3A/12V | |
| THD(%) | <2 | |
| NOISE(7M) | 64dB | 70dB |
| PACKAGE DIMENSIONS(MM) | 670*5000*570MM | |
| NET WEIGHT(KG) | 43KG | 44KG |



BS3750IS

| | |
|--------------------------|--------------------------------|
| ENGINE TYPE | SINGLE CYLINDER, 4-STROKE(OHV) |
| DISPLACEMENT | 208CC |
| START TYPE | RECOIL START |
| OIL CAPACITY | 0.6 |
| TANK CAPACITY(L) | 7.5L |
| FUL LOAD RUNNING TIME(H) | 3.5H |
| FREQUENCY(HZ) | 50/60HZ |
| VOLTAGE(V) | 120-240V |
| RATED POWER(KW) | 3KW |
| MAX POWER (KW) | 3.3KW |
| 12V DC OUTPUT | 8.3A/12V |
| THD(%) | <5 |
| NOISE(7M) | 72dB |
| PACKAGE DIMENSIONS(MM) | 480*420*520MM |
| NET WEIGHT(KG) | 25KG |



BS2250IS / BS2750IS / BS3150IS

| | | | |
|----------------------------------|-----------------------------------|--------|---------|
| ENGINE TYPE | SINGLE CYLINDER, 4 - STROKE (OHV) | | |
| DISPLACEMENT | 79.7CC | 97.7CC | 120CC |
| CAPACITY | 4L | 4L | 6L |
| RATED FREQUENCY | 50/60HZ | | |
| RATED VOLTAGE | 120-240V | | |
| RATED POWER | 1.8KW | 2.2KW | 2.5KW |
| MAX POWER | 2.0KW | 2.4KW | 2.8KW |
| NOISE(7M) | 62dB | 64dB | 65dB |
| WAVEFORM DEVIATION FACTOR(%) | <2 | | |
| FULL LOAD CONTINUUM RUNNING TIME | 4H/3H | | |
| 1/2 LOAD CONTINUUM RUNNING TIME | 6H/5H | | |
| CARTON DIMENSION(L X W X H) | 540*330*545MM | | |
| NET WEIGHT | 20KGS | 21KGS | 22.5KGS |
| GROSS WEIGHT | 22KGS | 23KGS | 24KGS |

13

HIGH PRESSURE WASHER



Product features:

1. Novel and exquisite appearance with patented design.
2. Sufficient power copper wire motor, more strong and powerful
3. Four angle nozzles to meet the various daily cleaning needs.
4. Using liquid filled shockproof pressure gauge with true pressure data.
5. Double filtration to avoid blocking and the water seal is more wear-resistant.



Commercial electric series -C model

| MODEL | ES2.2-2C | ES2.2-4C | ES3-4C | ES3.7-4C | ET2.2-4C | ET3-4C | ET4-4C |
|--------------|---------------|----------|--------|----------|-------------|--------|--------|
| POWER | 2.2 | 2.2 | 3.0 | 3.7 | 2.2 | 3.0 | 4.0 |
| VOLTAGE | SINGLE PHASE | | | | THREE PHASE | | |
| SPEED | 2900 | 1450 | 1450 | 1450 | 1450 | 1450 | 1450 |
| BAR | 110 | 110 | 150 | 160 | 110 | 110 | 180 |
| PSI | 1595 | 1595 | 2175 | 2320 | 1595 | 1595 | 2610 |
| FLOW RATE | 11 | 11 | 11 | 13 | 11 | 13 | 13 |
| PACKING SIZE | 680*550*530MM | | | | | | |
| G.W | 47KGS | 52KGS | 54KGS | 67KGS | 52KGS | 54KGS | 66KGS |

| MODEL | ES2.2-2D | ES2.2-4D | ES3-4D | ES3.7-4D | ET2.2-4D | ET3-4D | ET4-4D |
|--------------|---------------|----------|--------|-------------|----------|--------|--------|
| POWER | 2.2 | 2.2 | 3.0 | 3.7 | 2.2 | 3.0 | 4.0 |
| VOLTAGE | SINGLE PHASE | | | THREE PHASE | | | |
| SPEED | 2900 | 1450 | 1450 | 1450 | 1450 | 1450 | 1450 |
| BAR | 110 | 110 | 150 | 160 | 110 | 110 | 180 |
| PSI | 1595 | 1595 | 2175 | 2320 | 1595 | 1595 | 2610 |
| FLOW RATE | 11 | 11 | 11 | 13 | 11 | 13 | 13 |
| PACKING SIZE | 700*550*510MM | | | | | | |
| G.W. | 47KGS | 52KGS | 54KGS | 67KGS | 52KGS | 54KGS | 66KGS |



| MODEL | ES1.8-2L | ES1.8-2H |
|--------------|---------------|-------------|
| POWER | 1.8 | 1.8 |
| VOLTAGE | 220 | 220 |
| FREQUENCY | 50/60HZ | 50/60HZ |
| SPEED | 2900 | 2900 |
| BAR | 80 | 75 |
| PSI | 1160 | 1087 |
| FLOW RATE | 11 | 11 |
| PUMP | AXIAL PUMP | PE100L PUMP |
| PACKING SIZE | 620*450*500MM | |



| MODEL | BS170A | BS180A |
|--------------|--------------|-----------|
| POWER | 7HP | |
| SPEED | 3600 | |
| BAR | 170-190 | 180-220 |
| PSI | 2465-2755 | 2610-3190 |
| FLOW RATE | 9LPM | |
| PUMP HEAD | ALUMINUM | BRASS |
| PACKING SIZE | 56*48*53.5CM | |
| G.W. | 31KGS | 32KGS |



| MODEL | BS170K | BS180K |
|--------------|----------------|-----------|
| POWER | 7HP | |
| SPEED | 3600 | |
| BAR | 170-190 | 180-220 |
| PSI | 2465-2755 | 2610-3190 |
| FLOW RATE | 9LPM | |
| PUMP HEAD | Aluminum | Brass |
| PACKING SIZE | 73.5*44*53.5CM | |
| G.W. | 34KGS | 36KGS |

| MODEL | BS170NB | BS180NB |
|--------------|---------------|-----------|
| POWER | 7HP | |
| SPEED | 3600 | |
| BAR | 170-190 | 180-220 |
| PSI | 2465-2755 | 2610-3190 |
| FLOW RATE | 9LPM | |
| PUMP HEAD | Aluminum | Brass |
| PACKING SIZE | 830*440*535MM | |
| G.W. | 32KGS | 33KGS |



| MODEL | BS170D | BS180D |
|--------------|---------------|-----------|
| POWER | 7HP | |
| SPEED | 3600 | |
| BAR | 170-190 | 180-220 |
| PSI | 2465-2755 | 2610-3190 |
| FLOW RATE | 9LPM | |
| PUMP HEAD | Aluminum | Brass |
| PACKING SIZE | 680*540*635MM | |
| G.W. | 28KGS | 29KGS |



ENGINE



| | | | | | |
|----------------------------|------------------------------|--------|-------------|--------|--------|
| ENGINE MODEL | BS168F-1 | BS170F | BS188F | BS190F | BS192F |
| ENGINE TYPE | SINGLE CYLINDER,4-STROKE,OHV | | | | |
| STARTING SYSTEM | RECOIL/ELECTRIC | | | | |
| BORE*STROKE(MM) | 68*54 | 70*56 | 88*64 | 90*66 | 92*69 |
| DISPLACEMENT(ML) | 196 | 210 | 389 | 420 | 459 |
| OIL CAPACITY(L) | 0.5 | 0.5 | 1.1 | 1.1 | 1.1 |
| FUEL TANK CAPACITY(L) | 3.6 | 3.6 | 6.5 | 6.5 | 6.5 |
| NET WEIGHT(KG) | 13 | 13 | 28 | 28 | 32 |
| CARTON DIMENSIONS(L*W*H)MM | 400*340*350 | | 515*415*475 | | |
| QTY(20GP/40GP/40HQ) | 594/1188/1435 | | 305/625/625 | | |



| | | | | | | | | |
|-----------------------|--|------------------|------------------|-----------|-----------|-------------|--------------|------------|
| MODEL NAME | 173F | 178F | 186FA | 188F | 192F | 195F | 1100F | 1103F |
| ENGINE TYPE | SINGLE-CYLINDER,VERTICAL,4-STROKE AIR-COOLED DIESEL ENGINE | | | | | | | |
| BORE X STROKE | 73X59 | 78x62 | 86x72 | 88X75 | 92X75 | 95X75 | 100X84 | 103X88 |
| ENGINE MODEL | 247CC | 296CC | 418CC | 456CC | 498CC | 531CC | 660CC | 718CC |
| MAX OUTPUT | (5.7HP)4.2KW | (6HP)4.4KW | (9.6HP)7.1KW | (11HP)8KW | (12HP)9KW | (13HP)9.5KW | (14HP)10.5KW | (15HP)11KW |
| RPM | 3600 | | | | | | | |
| FUEL CAP/WORKING TIME | 2.5 LITERS/ 2.5 HR | 3.5 LITERS/ 2 HR | 5.5 LITERS/ 2 HR | | | | | |
| G./NET WEIGHT | 30/25KG | 36/31KG | 55/50KG | 55/50KG | 56/51KG | 56/51KG | 65/60KG | 65/60KG |



| SPECIFICATION | BS20 | BS30 | BS40A | BS40B |
|----------------------------|-------------|-------------|-------------|-------------|
| SUCTION PORT DIAMETER(MM) | 2" 50MM | 3" 80MM | 4" 100MM | 4" 100MM |
| DISCHARGE HEAD LIFT(MM) | 2" 50MM | 3" 80MM | 4" 100MM | 4" 100MM |
| SUCTION HEAD LIFT(M) | 8 | 8 | 7 | 8 |
| TOTAL HEAD LIFT(M) | 28 | 30 | 25 | 30 |
| FLUX(M3/H) | 36 | 60 | 75 | 90 |
| ENGINE MODEL | BS168F-1 | BS170F | BS170F | BS188F |
| DISPLACEMENT(ML) | 196 | 210 | 210 | 389 |
| FUEL TANK CAPACITY(L) | 3.6 | 3.6 | 3.6 | 6.5 |
| NET WEIGHT(KG) | 13 | 13 | 23 | 28 |
| CARTON DIMENSIONS(L*W*H)MM | 490*385*405 | 510*385*425 | 560*440*500 | 635*480*520 |
| QTY(20GP/40GP/40HQ) | 360/720/865 | 330/660/820 | 330/660/820 | 330/660/820 |



| SPECIFICATION | BS15H | BS20H |
|----------------------------|-----------|--------------|
| SUCTION PORT DIAMETER(MM) | | 2" 50MM |
| DISCHARGE HEAD LIFT(MM) | 1.5"/1"1" | 2"/1.5"/1.5" |
| SUCTION HEAD LIFT(M) | | 7 |
| TOTAL HEAD LIFT(M) | 50 | 80 |
| FLUX(M3/H) | 30 | 16 |
| ENGINE MODEL | | BS170F |
| DISPLACEMENT(ML) | | 210 |
| FUEL TANK CAPACITY(L) | | 3.6 |
| NET WEIGHT(KG) | | 23 |
| CARTON DIMENSIONS(L*W*H)MM | | 510*385*425 |
| QTY(20GP/40GP/40HQ) | | 330/660/820 |



| MODEL NAME | DP20 | DP30 | DP40 | DP60 |
|--------------------|-----------|-----------|------------|------------|
| INLET/OUTLET DIA | 2X2" 50MM | 3X3" 80MM | 4X4" 100MM | 6X6" 150MM |
| HEAD | 26M | 28M | 31M | 15M |
| FLUX | 36 | 50 | 96 | 180 |
| PRIMING TIME(S/4M) | 70 | 120 | 180 | 200 |
| SUCTION | | 8M | | 6M |
| RPM | 3600 | | | |
| ENGINE MODEL | 173F | 178F | 186FA | 192FB |
| FUEL TANK CAP | 2.5L | 3.5L | 5.5L | 12.5L |
| BIG TANK CAP | 13.5L | 13.5L | 13.5L | include |
| WHEEL PUSH | Optional | Optional | Optional | include |



| MODEL NAME | DP20T | DP30T | DP40T | DP60T | DP20C |
|--------------------|-----------|-----------|------------|------------|-----------|
| INLET/OUTLET DIA | 2X2" 50MM | 3X3" 80MM | 4X4" 100MM | 6X6" 150MM | 2X2" 50MM |
| HEAD M | 10 | 25 | 31 | 20 | 20 |
| FLUX M3/H | 30 | 45 | 96 | 180 | 20 |
| PRIMING TIME(S/4M) | 70 | 120 | 180 | 180 | 70 |
| SUCTION M | | 8M | | 6M | 8M |
| RPM | 3600 | | | | |
| ENGINE MODEL | 178F | 186FA | 192FC | 195F | 173F |
| FUEL TANK CAP | 3.5L | 5.5L | 12.5L | 12.5L | 3.5L |
| BIG TANK CAP | 13.5L | 13.5L | 13.5L | include | 13.5L |
| WHEEL PUSH | Optional | Optional | Optional | include | Optional |



| MODEL NAME | DP171CI | DP175CI | DP178CI | DP188CI | DP208CI | DP150CI |
|------------------|---------------|-----------|-----------|-----------|-----------|------------|
| INLET/OUTLET DIA | 1.5X1.5" 40MM | 2X2" 50MM | 2X2" 50MM | 3X3" 80MM | 3X3" 80MM | 4X4" 100MM |
| IMPELLER MM | 171 | 175 | 198 | 188 | 208 | 150 |
| HEAD M | 65 | 70 | 85 | 75 | 90 | 45 |
| FLUX M3/H | 26 | 30 | 32 | 40 | 42 | 130 |
| PRIMING TYPE | NSP | | | | | |
| SUCTION M | 8 | | | | | |
| RPM | 3600 | | | | | |
| ENGINE MODEL | 178F | 186FA | | 192FC | | |
| FUEL TANK CAP | 3.5L | 12.5L | | | | |
| BIG TANK CAP | 13.5L | 13.5L | | | | |
| WHEEL PUSH | OPTIONAL | | | | | |

60NM

This 20V Brushless 1/2" 2-Speed Drill packs 60 N.m of torque with exceptional runtime.

POWERFUL BRUSHLESS MOTOR

Providing speeds of up to 2000 RPM for high speed applications.

60NM 2-SPEED GEAR BOX

Producing 60 N.m of torque with a 25 stage clutch setting.

ANTI-KICKBACK TECHNOLOGY

**20V
PRO
BRUSHLESS**



DLE1520

| | |
|----------------------------|-----------------------|
| Voltage | 16.8V |
| Brushless Motor | 3820 High-Performance |
| Rolled steel | 10MM |
| Wood | 20MM |
| Max Torque | 35N.M. |
| No Load Speed 1 | 0-450rpm |
| No Load Speed 2 | 0-1450rpm |
| Adjustable Torque Settings | 20+1 |
| Chuck Capacity | 1-10mm |
| Dimension | 28*24*8cm |
| Meas | 2kgs |



DLE1521

| | |
|-----------------|-----------------------|
| Voltage | 16.8V |
| Brushless Motor | 3820 High-Performance |
| Max Torque | 40N.M. |
| No Load Speed 1 | 0-450rpm |
| No Load Speed 2 | 0-1450rpm |
| Torque | 20+3 |
| Rolled steel | 10MM |
| Wood | 32MM |
| Dimension | 31*25*11cm |
| Meas | 2kgs |



DLE1522

| | |
|-----------------|-----------------------|
| Voltage | 21V |
| Brushless Motor | 4820 High-Performance |
| Max Torque | 60N.M. |
| No Load Speed 1 | 0-450rpm |
| No Load Speed 2 | 0-1450rpm |
| Torque | 20+3 |
| Rolled steel | 13MM |
| Wood | 36MM |
| Dimension | 35*29*11cm |
| Meas | 2kgs |



DBE1313

| | |
|----------------------------|-------------------|
| Voltage | 21V |
| Motor | 550 Brushed Motor |
| Rolled steel | 10MM |
| Wood | 20MM |
| Max Torque | 30 N.M. |
| No Load Speed 1 | 0-450rpm |
| No Load Speed 2 | 0-1450rpm |
| Adjustable Torque Settings | 17+1 |
| Chuck Capacity | 1-10 mm |
| Meas | 2kgs |



DBE1314

| | |
|----------------------------|-------------------|
| Voltage | 21V |
| Motor | 550 Brushed Motor |
| Rolled steel | 10MM |
| Wood | 20MM |
| Max Torque | 30 N.M. |
| No Load Speed 1 | 0-450rpm |
| No Load Speed 2 | 0-1450rpm |
| Adjustable Torque Settings | 17+1 |
| Chuck Capacity | 1-10 mm |
| Dimension | 31*25*11cm |
| Meas | 2kgs |



GLE1201

| | |
|-------------------------|-----------------------|
| Voltage | 21V |
| Brushless Motor | 4820 High-Performance |
| No-Load Speed | 5000-9000RPM |
| Grinding wheel diameter | 100/115/125MM |
| Dimension | 38.5*37*12cm |
| Meas | 2kgs |



WLE1730

| | |
|------------------|-----------------------|
| Voltage | 21V |
| Brushless Motor | 4820 High-Performance |
| Max Torque | 330N.M. |
| Impact frequency | 0-3200BPM |
| No Load Speed | 0-2250r/min |
| Spindle Size | 1/2inch(12.7mm) |
| Dimension | 38.5*37*9.6cm |
| Meas | 2kgs |



WLE1731

| | |
|------------------|-----------------------|
| Voltage | 21V |
| Brushless Motor | 4820 High-Performance |
| Impact frequency | 0-3200BPM |
| Max torque | 500 N.m |
| No-load Speed | 0-2250r/min |
| Spindle Size | 1/2inch(12.7mm) |
| Screw thread | 22MM |
| Dimension | 38.5*37*12cm |
| Meas | 2.5kgs |



HLE1422

| | |
|-----------------------|------------|
| Voltage | 21V |
| Max drilling Dia.(MM) | |
| Concrete | 22 |
| Steel | 13 |
| Wood | 28 |
| No-load speed | 0-1400RPM |
| Hammer Frequency | 0-4700BPM |
| Max hammer force | 2.0J |
| Meas | 46*32*11cm |
| Meas | 2.5kgs |

25 HAND TOOLS



Perfectly balanced head, drop forged from selected tool steel and heat treated.
 Rubber handle for secure grip
 The tubular steel shaft is securely fitted to the head

STONING HAMMER (TPR HANDLE)



| NUMBER | SIZE | INNER BOX | CARTON |
|---------------|--------|--------------|--------|
| CS-SHTH013001 | 1000G | 6PCS | 24PCS |
| CS-SHTH013002 | 1500G | 6PCS | 12PCS |
| CS-SHTH013003 | 2000G | 6PCS | 12PCS |
| CS-SHTH013004 | 5000G | NO INNER BOX | 4PCS |
| CS-SHTH013005 | 8000G | NO INNER BOX | 2PCS |
| CS-SHTH013006 | 10000G | NO INNER BOX | 2PCS |



CLAW HAMMER TPR HANDLE



| NUMBER | SIZE | INNER BOX | CARTON |
|---------------|------|-----------|--------|
| CS-CHTH010001 | 350G | 6PCS | 60PCS |
| CS-CHTH010002 | 500G | 6PCS | 36PCS |
| CS-CHTH010003 | 750G | 6PCS | 36PCS |



25 HAND TOOLS

SCREWDRIVER



| NUMBER | SIZE | INNER BOX | CARTON |
|------------|------|--------------|--------|
| CS-S165005 | 7PCS | NO INNER BOX | 24SETS |

PLIERS SET



| NUMBER | SIZE | INNER BOX | CARTON |
|------------|------|--------------|--------|
| CS-S165005 | 7PCS | NO INNER BOX | 24SETS |

PLIERS SET



| NUMBER | SIZE | INNER BOX | CARTON |
|----------------|---------|-----------|--------|
| CS-PRFWC030002 | 7"180MM | 6PCS | 36SETS |

12PCS FLEXIBLE RATCHET COMBINATION SPANNER



| NUMBER | SIZE | INNER BOX | CARTON |
|------------|------|--------------|--------|
| CS-S165005 | 7PCS | NO INNER BOX | 24SETS |

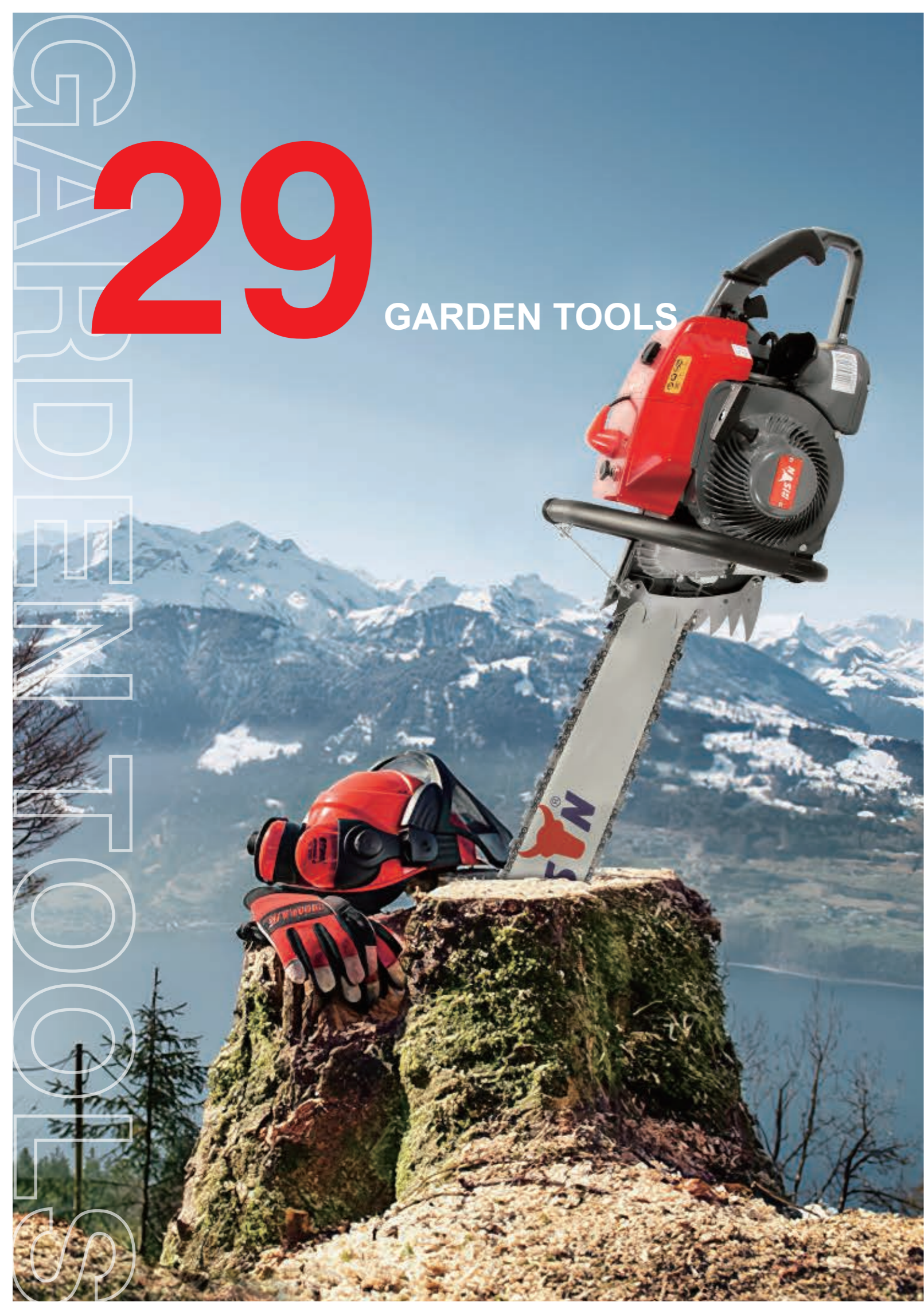
HOUSEHOLD LADDER

| NUMBER | SIZE | INNER BOX | CARTON |
|---------------|-----------|--------------|--------|
| CS-ATTL210007 | 2M+1.4M | NO INNER BOX | 1PCS |
| CS-ATTL210008 | 2M+2.6M | NO INNER BOX | 1PCS |
| CS-ATTL210009 | 2.6M+3.2M | NO INNER BOX | 1PCS |
| CS-ATTL210010 | 3.8M+3.2M | NO INNER BOX | 1PCS |



29

GARDEN TOOLS



MOD.268

| | |
|-----------------------------------|--|
| Engine Type | Air Cooling Single Cylinder Two Stroke |
| Displacement | 69cc |
| Rated Output Power&Relevant Speed | 3.2kw/7500rpm |
| Fuel Mixture Ratio | 25/1(Gasoline 25:Two-cycle Oil 1) |
| Fuel Tank Capacit | 750ml |
| Engline Oil Tank Capacity | 450ml |
| Net Weight | 7.0kg |
| Meas | 470x250x330mm |



MOD.365

| | |
|-----------------------------------|--|
| Engine Type | Air Cooling Single Cylinder Two Stroke |
| Displacement | 615cc |
| Rated Output Power&Relevant Speed | 3.4kw/7500rpm |
| Fuel Mixture Ratio | 25/1(Gasoline 25:Two-cycle Oil 1) |
| Fuel Tank Capacit | 750ml |
| Engline Oil Tank Capacity | 450ml |
| Net Weight | 7.0kg |
| Meas | 470x250x330mm |



MOD.070

| | |
|-----------------------------------|--|
| Engine Type | Air Cooling Single Cylinder Two Stroke |
| Eylinder Diameter x Steoke | 58X40MM |
| Displacement | 105.7cc |
| Rated Output Power&Relevant Speed | 4.8KW/8000rpm |
| Fuel Mixture Ratio | 25/1(Gasoline 25:Two-cycle Oil 1) |
| Fuel Tank Capacit | 750ml |
| Engline Oil Tank Capacity | 450ml |
| Net Weight | 7.0kg |
| Meas | 470x250x330mm |



MOD.380/381

| | |
|-----------------------------------|--|
| Engine Type | Air Cooling Single Cylinder Two Stroke |
| Displacement | 72.2cc |
| Rated Output Power&Relevant Speed | 3.3kw/7500rpm |
| Fuel Mixture Ratio | 25/1(Gasoline 25:Two-cycle Oil 1) |
| Fuel Tank Capacit | 680ml |
| Engline Oil Tank Capacity | 360ml |
| Net Weight | 6.7kg |
| Meas | 480x275x610mm/2pcs |

MOD.066



| | |
|-----------------------------------|--|
| Engine Type | Air Cooling Single Cylinder Two Stroke |
| Displacement | 91.6cc |
| Rated Output Power&Relevant Speed | 5.2kw/9300rpm |
| Fuel Mixture Ratio | 25/1(Gasoline 25:Two-cycle Oil 1) |
| Fuel Tank Capacit | 680ml |
| Engline Oil Tank Capacity | 360ml |
| Net Weight | 7kg |
| Meas | 480x275x610mm/2pcs |

MOD.180



| | |
|-----------------------------------|--|
| Engine Type | Air Cooling Single Cylinder Two Stroke |
| Eylinder Diameter x Steoke | 38X28MM |
| Displacement | 31.8cc |
| Rated Output Power&Relevant Speed | 1.5KW/9500rpm |
| Fuel Mixture Ratio | 25/1(Gasoline 25:Two-cycle Oil 1) |
| Fuel Tank Capacit | 250ml |
| Engline Oil Tank Capacity | 145ml |
| Net Weight | 3.9kg |
| Meas | 380x250x280mm |

MOD.250



| | |
|-----------------------------------|--|
| Engine Type | Air Cooling Single Cylinder Two Stroke |
| Eylinder Diameter x Steoke | 38X28MM |
| Displacement | 45.5cc |
| Rated Output Power&Relevant Speed | 2.3KW/9500rpm |
| Fuel Mixture Ratio | 25/1(Gasoline 25:Two-cycle Oil 1) |
| Fuel Tank Capacit | 470ml |
| Engline Oil Tank Capacity | 200ml |
| Net Weight | 5kg |
| Meas | 530x510x320mm/2pcs |

MOD.2500



| | |
|-----------------------------------|-----------------------------------|
| Engine Type | 2 Stroke |
| Displacement | 25.4cc |
| Rated Output Power&Relevant Speed | 0.9kw/7500rpm |
| Fuel Mixture Ratio | 25/1(Gasoline 25:Two-cycle Oil 1) |
| Fuel Tank Capacit | 230ml |
| Engline Oil Tank Capacity | 160ml |
| Net Weight | 6.7kg |

MOD.382



| | |
|-----------------------------------|-----------------------------------|
| Engine Type | 2 Stroke |
| Displacement | 72.2cc |
| Rated Output Power&Relevant Speed | 3.3kw/7500rpm |
| Fuel Mixture Ratio | 25/1(Gasoline 25:Two-cycle Oil 1) |
| Fuel Tank Capacit | 680ml |
| Engline Oil Tank Capacity | 360ml |
| Net Weight | 6.7kg |
| Meas | 450x260x300mm |

MOD.3600



| | |
|-----------------------------------|-----------------------------------|
| Engine Type | 2 Stroke |
| Displacement | 25.4cc |
| Rated Output Power&Relevant Speed | 1.0kw/7500rpm |
| Fuel Mixture Ratio | 25/1(Gasoline 25:Two-cycle Oil 1) |
| Fuel Tank Capacit | 260ml |
| Engline Oil Tank Capacity | 180ml |
| Net Weight | 3.2kg |
| Meas | 310x250x230mm |

MOD.3900



| | |
|-----------------------------------|-----------------------------------|
| Engine Type | 2 Stroke |
| Displacement | 25.4cc |
| Rated Output Power&Relevant Speed | 1.0kw/7500rpm |
| Fuel Mixture Ratio | 25/1(Gasoline 25:Two-cycle Oil 1) |
| Fuel Tank Capacit | 230ml |
| Engline Oil Tank Capacity | 160ml |
| Net Weight | 3.2kg |
| Meas | 310x250x230mm |

MOD.4000



| | |
|-----------------------------------|-----------------------------------|
| Engine Type | 2 Stroke |
| Displacement | 39.6cc |
| Rated Output Power&Relevant Speed | 1.5kw/11000rpm |
| Fuel Mixture Ratio | 25/1(Gasoline 25:Two-cycle Oil 1) |
| Fuel Tank Capacit | 410ml |
| Engline Oil Tank Capacity | 240ml |
| Net Weight | 4.3kg |
| Meas | 470x250x330mm |

MOD.4200



| | |
|-----------------------------------|-----------------------------------|
| Engine Type | 2 Stroke |
| Displacement | 39.6cc |
| Rated Output Power&Relevant Speed | 1.5kw/11000rpm |
| Fuel Mixture Ratio | 25/1(Gasoline 25:Two-cycle Oil 1) |
| Fuel Tank Capacit | 410ml |
| Engline Oil Tank Capacity | 240ml |
| Net Weight | 4.3kg |
| Meas | 470x250x330mm |

MOD.5200



| | |
|-----------------------------------|-----------------------------------|
| Engine Type | 2 Stroke |
| Displacement | 49.3cc |
| Rated Output Power&Relevant Speed | 2.0kw/7500rpm |
| Fuel Mixture Ratio | 25/1(Gasoline 25:Two-cycle Oil 1) |
| Fuel Tank Capacit | 550ml |
| Engline Oil Tank Capacity | 260ml |
| Net Weight | 6.0kg |
| Meas | 490x260x330mm |

33

CONSTRUCTION MACHINERY



| | |
|------------------------|---------------------|
| Desprition | Tamping Rammer |
| Engine Type | Petrol,Lifan 168F-2 |
| Power | 5.0HP/3.7KW |
| Impact force(CN) | 10 |
| Jumping stroke(mm) | 40-65 |
| Impact number(per/min) | 450-660 |
| Fuel Tank Capacity(L) | 2 |
| Shoe size (mm) | 330*290 |
| Weight KG | 80 |

| | |
|-------------------------------|---|
| Plate size L*W (mm) | 560*475 |
| Travel speed | 15-20 |
| Limited grade ability | 20 |
| Vibration Frenquency vpm (Hz) | 5600 |
| Centrifugal force (KN) | 13.5 |
| Starting system | Recoil starter |
| Packing size (L*W*H)mm | 880*530*670 |
| Net weight (KG) | 80 |
| Engine model Option | "Lifan G160F @ 4.1kW (5.5HP) 4 cycle Gasoline Engine" "Honda GX160 @ @4.1kW (5.5HP) 4 cycle Gasoline Engine" |



| | |
|-------------------------------|--------------------------------|
| Plate size L*W (mm) | 660*440 |
| Max Travel Speed(m/min) | 20 |
| Centrifugal force (KN) | 25 |
| Vibration Frenquency vpm (Hz) | 4600 |
| Net weight (KG) | 145 |
| Engine model | Petrol, Honda GX160 5.5HP(4KW) |

| | |
|--------------------|---------------------------------------|
| Model | BS-VH |
| Engine | Petrol, Honda GX160 |
| Type of combustion | Air-cooled, single cylinder, 4-stroke |
| Power(HP) | 5.5 |
| Weight kg(kg) | 22 |
| Frequency | 12,000 vibrations per minute |
| Connect | Ball type coupling Dynapac coupling |



AIR COMPRESSOR 35

AIR COMPRESSOR



| Model L | DO42BM-24 | DO42BM-24 | DO47BM-24 | DO47BM-24 | DO51BM-24 |
|------------------------|--------------|--------------|--------------|--------------|--------------|
| Tank Gal | 24 | 24 | 24 | 24 | 24 |
| Voltage/Frequency V/Hz | 230/50 | 120/60 | 230/50 | 120/60 | 230/50 |
| Power kW/HP | 1.1/1.5 | 1.1/1.5 | 1.5/2.0 | 1.7/2.5 | 1.7/2.5 |
| Speed rpm | 2850 | 3450 | 2850 | 3450 | 2850 |
| Noise dB | 85 | 88 | 89 | 91 | 89 |
| Limin | 135 | 155 | 185 | 240 | 240 |
| Air Displacement CFM | 4.8 | 5.5 | 6.4 | 8.5 | 8.5 |
| Bar | 8.0 | 8.8 | 8.0 | 8.8 | 8.0 |
| Work Pressure Psi | 115 | 125 | 115 | 125 | 115 |
| KG N.W | 20 | 21 | 22 | 24 | 24 |
| Dimensions L*W*H (cm) | 58.5*28.5*63 | 58.5*28.5*63 | 58.5*28.5*63 | 58.5*28.5*63 | 58.5*28.5*63 |
| 20" | 27 | 27 | 27 | 27 | 27 |
| 40" | 540 | 540 | 540 | 540 | 540 |
| MOQ 40"H | 640 | 640 | 640 | 640 | 640 |

| Model L | DO47TA -50 | DO51TA-50 | |
|------------------------|------------|-----------|----------|
| Tank Gal | 50 | 50 | 50 |
| Voltage/Frequency V/Hz | 230/50 | 120/60 | 230/50 |
| Power kW/HP | 1.5/2.0 | 1.7/2.5 | 1.7/2.5 |
| Speed rpm | 2850 | 3450 | 2850 |
| Noise dB | 89 | 91 | 89 |
| Limin | 185 | 240 | 240 |
| Air Displacement CFM | 6.4 | 8.5 | 8.5 |
| Bar | 8.0 | 8.8 | 8.0 |
| Work Pressure Psi | 115 | 125 | 115 |
| KG N.W | 33 | 34 | 34 |
| Dimensions L*W*H (cm) | 74*33*72 | 74*33*72 | 74*33*72 |
| 20" | 156 | 156 | 156 |
| 40" | 315 | 315 | 315 |
| MOQ 40"H | 315 | 315 | 315 |



| Model | L | OF550X2-50 | OF750X2-50 |
|-------------------|------------|------------|------------|
| Tank | Gal | 50 | 50 |
| | | 12.5 | 12.5 |
| Voltage/Frequency | V/Hz | 230/50 | 230/50 |
| Power | kW | 1.1 | 1.5 |
| | HP | 1.5 | 2.0 |
| Speed | rpm | 1400 | 1400 |
| Noise | dB | 68 | 70 |
| Flow | L/min | 200 | 260 |
| Air Displacement | CFM | 7.0 | 7.7 |
| Work Pressure | Bar | 8.0 | 8.0 |
| | Psi | 115 | 115 |
| Weight | kg | 42 | 42 |
| | N.W | | |
| Dimensions | L*W*H (cm) | 73*33*67 | 73*33*67 |
| | 20" | 160 | 160 |
| | 40" | 330 | 330 |
| | 40"H | 440 | 440 |



| Model | L | DOF1100X2-50 | DOF1500X2-50 |
|-------------------|------------|--------------|--------------|
| Tank | Gal | 50 | 50 |
| | | 12.5 | 12.5 |
| Voltage/Frequency | V/Hz | 230/50 | 230/50 |
| Power | kW | 1.1*2 | 1.5*2 |
| | HP | 3.0 | 4.0 |
| Speed | rpm | 2800 | 2800 |
| Noise | dB | 74 | 74 |
| Flow | L/min | 380 | 380 |
| Air Displacement | CFM | 13.4 | 13.4 |
| Work Pressure | Bar | 8.0 | 8.0 |
| | Psi | 115 | 115 |
| Weight | kg | 43 | 45 |
| | N.W | | |
| Dimensions | L*W*H (cm) | 73*33*67 | 73*33*67 |
| | 20" | 160 | 160 |
| | 40" | 330 | 330 |
| | 40"H | 440 | 440 |



| Model | L | BH65-100 | BH65b-100 |
|-------------------|------------|-----------|-----------|
| Tank | Gal | 100 | 100 |
| | | 25.2 | 25.2 |
| Voltage/Frequency | V/Hz | 230/50 | 230/50 |
| Power | kW | 1.5 | 2.2 |
| | HP | 2.5 | 3.0 |
| Speed | rpm | 800 | 950 |
| Noise | dB | 77 | 77 |
| Flow | L/min | 260 | 270 |
| Air Displacement | CFM | 9.2 | 13.1 |
| Work Pressure | Bar | 8.0 | 8.0 |
| | Psi | 115 | 115 |
| Weight | kg | 74 | 78 |
| | N.W | | |
| Dimensions | L*W*H (cm) | 108*45*84 | 108*45*84 |
| | 20" | 50 | 50 |
| | 40" | 100 | 100 |
| | 40"H | 150 | 150 |

| Model | L | BH65-100V | BH65b-100V |
|-------------------|------------|-----------|------------|
| Tank | Gal | 100 | 100 |
| | | 25.2 | 25.2 |
| Voltage/Frequency | V/Hz | 230/50 | 230/50 |
| Power | kW | 1.8 | 2.2 |
| | HP | 2.5 | 3.0 |
| Speed | rpm | 800 | 950 |
| Noise | dB | 77 | 77 |
| Flow | L/min | 260 | 270 |
| Air Displacement | CFM | 9.2 | 13.1 |
| Work Pressure | Bar | 8.0 | 8.0 |
| | Psi | 115 | 115 |
| Weight | kg | 84 | 88 |
| | N.W | | |
| Dimensions | L*W*H (cm) | 48*48*92 | 48*48*92 |
| | 20" | 60 | 60 |
| | 40" | 120 | 120 |
| | 40"H | 120 | 120 |



| Model | L | BV51-100 | BV65-100 |
|-------------------|------------|-----------|-----------|
| Tank | Gal | 100 | 100 |
| | | 25.2 | 25.2 |
| Voltage/Frequency | V/Hz | 230/50 | 230/50 |
| Power | kW | 1.5 | 2.2 |
| | HP | 2.0 | 3.0 |
| Speed | rpm | 950 | 950 |
| Noise | dB | 79 | 79 |
| Flow | L/min | 180 | 280 |
| Air Displacement | CFM | 7.4 | 10.9 |
| Work Pressure | Bar | 8.0 | 8.0 |
| | Psi | 115 | 115 |
| Weight | kg | 56 | 60 |
| | N.W | | |
| Dimensions | L*W*H (cm) | 108*45*84 | 108*45*84 |
| | 20" | 50 | 60 |
| | 40" | 100 | 100 |
| | 40"H | 150 | 150 |



| Model | L | W3065-150 |
|-------------------|------------|-----------|
| Tank | Gal | 150 |
| | | 25.2 |
| Voltage/Frequency | V/Hz | 230/50 |
| Power | kW | 3.0 |
| | HP | 4.0 |
| Speed | rpm | 950 |
| Noise | dB | 79 |
| Flow | L/min | 420 |
| Air Displacement | CFM | 16.4 |
| Work Pressure | Bar | 8.0 |
| | Psi | 115 |
| Weight | kg | 85 |
| | N.W | |
| Dimensions | L*W*H (cm) | 120*50*88 |
| | 20" | 40 |
| | 40" | 80 |
| | 40"H | 120 |



Gasoline generator accessories



Crank case



Cylinder Head



Recoil starter assembly



Fan cover(recoil)



Cylinder head cover



Oil Amplifier



Motor



Muffler



Camshaft assembly(Nylon)



Camshaft assembly(Iron)



Crankshaft



Ignition Coil



Oil Gauge set



AVR(Plastic)



Air Filter



Engine air filter



Piston Assembly



Fuel Control valve



Carburetor (Engine)



Engine Fuel Tank Cap



Piston Ring



Intake Exhaust Valve



Bearing 6205



Spark Plug



Carburetor (Generator)



Connecting Rod Assembly



Shockproof Foot



Battery 7AH



Wheel



Engine Muffler



Fuel Tank



Alternator

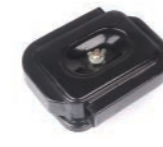


Whole gasket

Diesel generator accessories



Crank case



Air Filter



Air Filter (186 Silent)



Piston Assembly



Filter Element



Recoil starter assembly



Recoil starter assembly



Fuel Filter(With bracket)



Fuel Filter(silent)



Fuel filter



Voltage Regulator



Main Bearing Shell



Magneto



Fuel injection pump



Connecting Rod Assembly



Fuel Pump



Cylinder Head



Piston Ring



Starter Pulley



Oil Gauge set



Oil Filter



valve spring



Oil nozzle



Starting Motor



Pull Rod case



Fuel Tank



Shockproof Foot



Oil Alert



Fuel Tank (Engine)



Oil switch



Cylinder cover seal



Filter element 178F



Whole set gasket